



जनजातीय कार्य मंत्रालय
MINISTRY OF TRIBAL AFFAIRS
GOVERNMENT OF INDIA



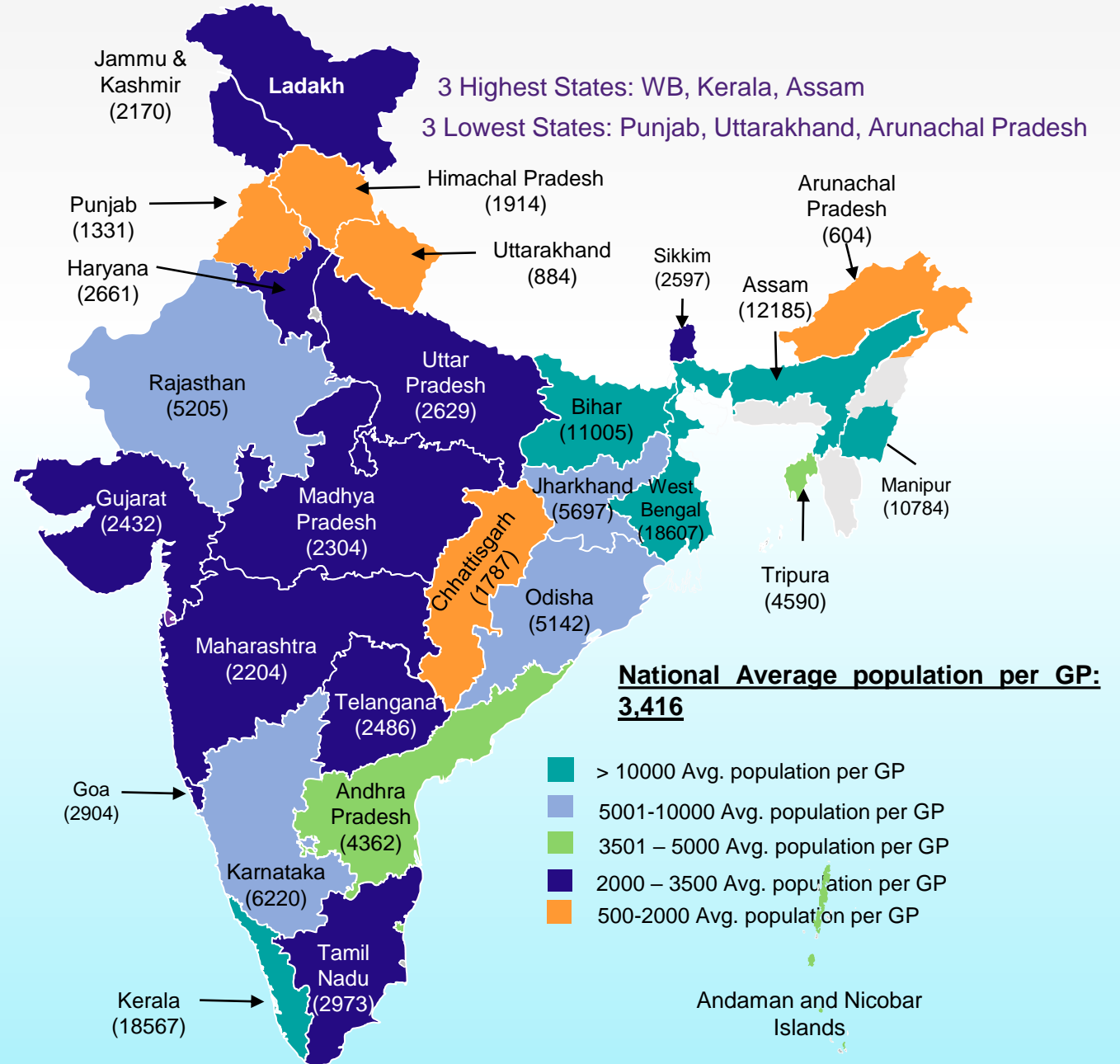
National Conference on PESA

Legislative and Administrative Framework under PESA (Session I)

Panchayat Statistics

Avg. population per GP

No. of Gram Panchayats	:	268948
No. of Block Panchayats	:	6,829
No. of District Panchayats	:	659
No. of Elected members of PRIs	:	31.47 lakh
No. of Elected Women	:	14.54 lakh
Representatives		(46%)



PESA States

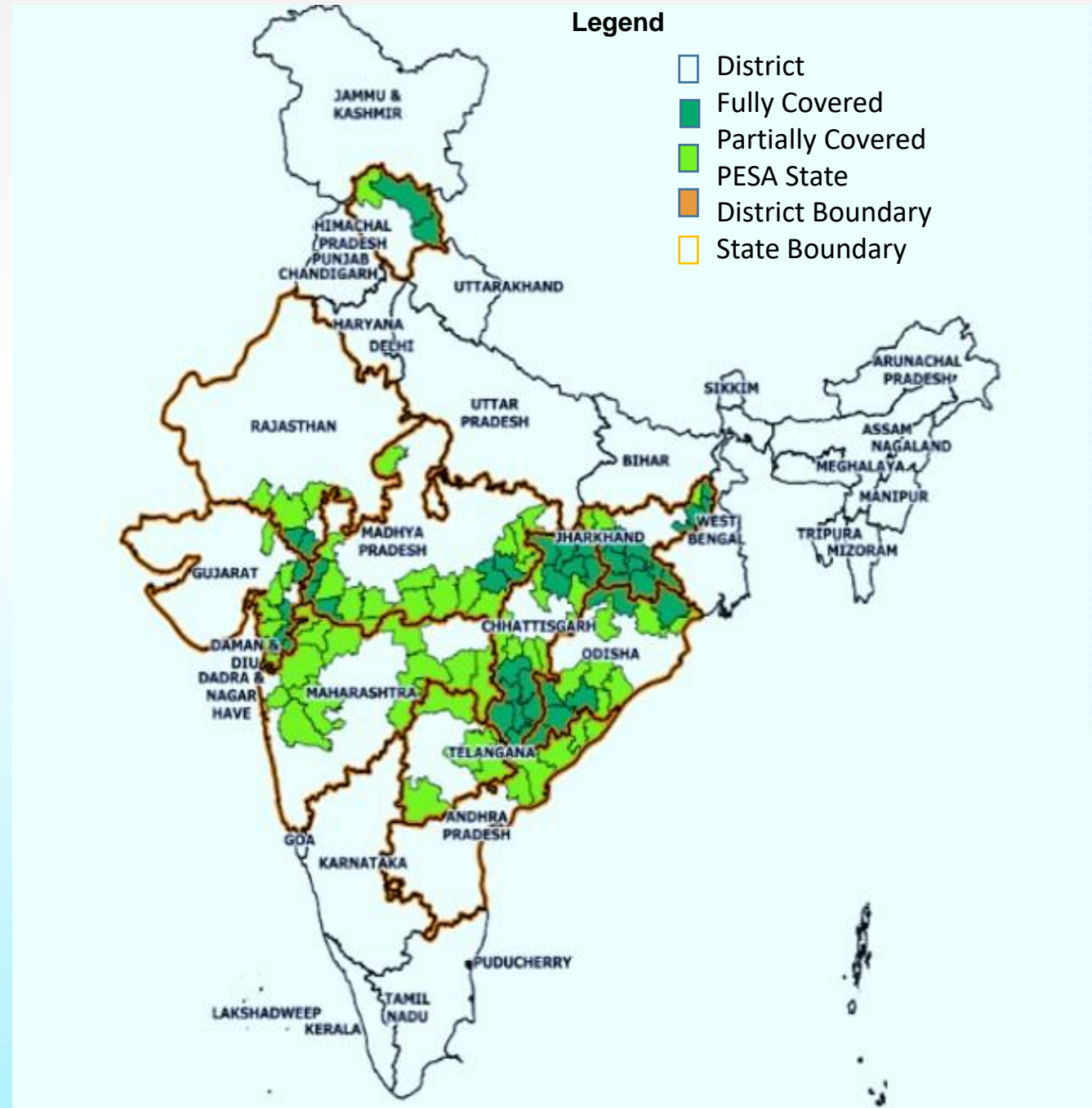
PESA Villages : 77564

PESA Panchayats : 22141

PESA Blocks : 664

PESA	Fully	
Districts	covered	: 45
	Partially	: 63
	covered	

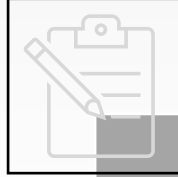
PESA States: Andhra Pradesh, Chhattisgarh, Gujarat, Himachal Pradesh, Jharkhand, Madhya Pradesh, Maharashtra, Odisha, Rajasthan, Telangana





Draft Model Rules for PESA

- MoPR had formulated Draft Model Rules for PESA which were circulated among the PESA States in 2009



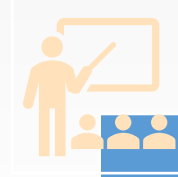
GPDP Guidelines for PESA Areas

- A separate guidelines for participatory GPDP for local development in PESA Areas was formulated and circulated to PESA States.



Handbook on community mobilisation

- Handbook on Community Mobilisation in Fifth Scheduled Areas was released on April 24, 2015



Awareness workshops

- Regular Workshops with States for awareness on provisions of PESA and coordination between stakeholders on implementing the Act



सत्यमेव जयते

Gram Sabhas Empowerment in PESA Areas



- Gram Sabhas are primarily empowered for
 - Safeguarding & preserving the traditions and customs of tribal communities
 - Customary mode of dispute resolution
 - identification of beneficiaries for different schemes
 - To approve plans & projects for social and economic development
 - issue utilisation certificates
 - Gram Sabha to be consulted before acquisition of land in scheduled areas
 - recommendation required for exploitation of minor minerals
 - Power to regulate intoxicants, ownership of minor forest produce, prevent alienation of land, minor water bodies, manage village markets, money lending



Gram Sabha empowered to exercise control over of institutions and functionaries in all social sectors

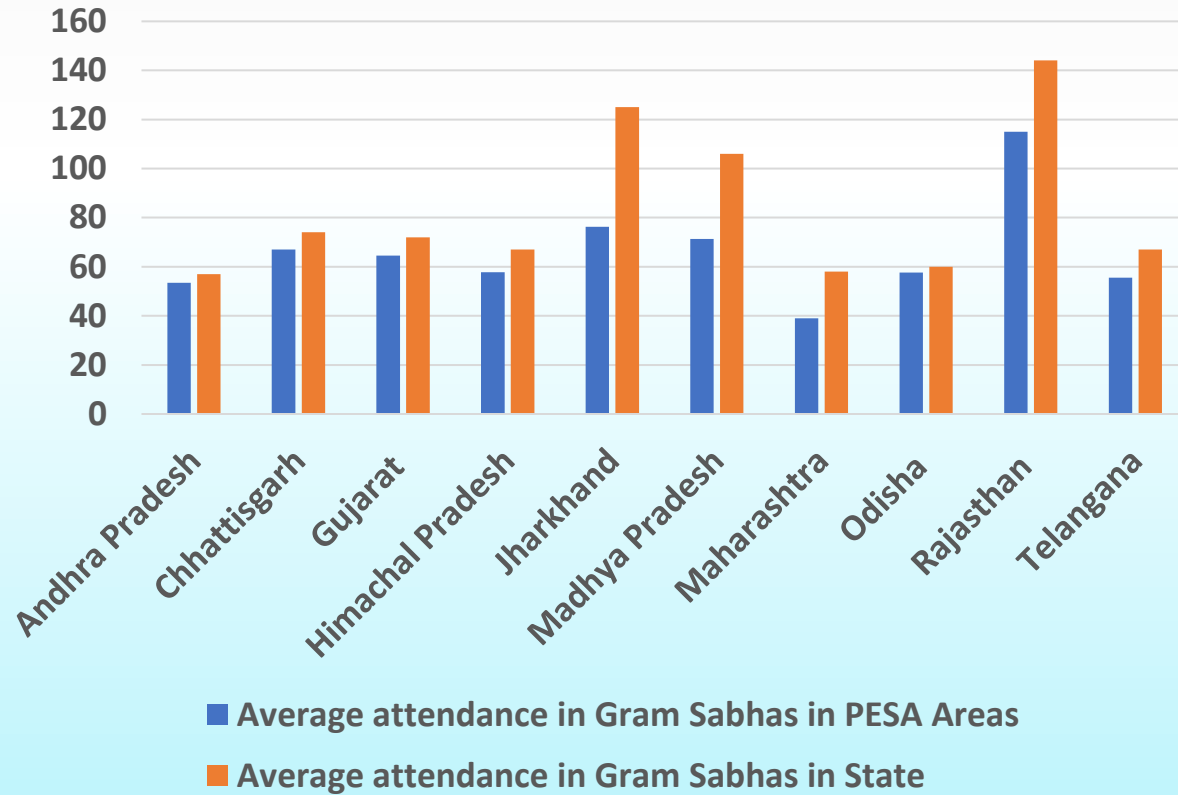


सत्यमेव जयते

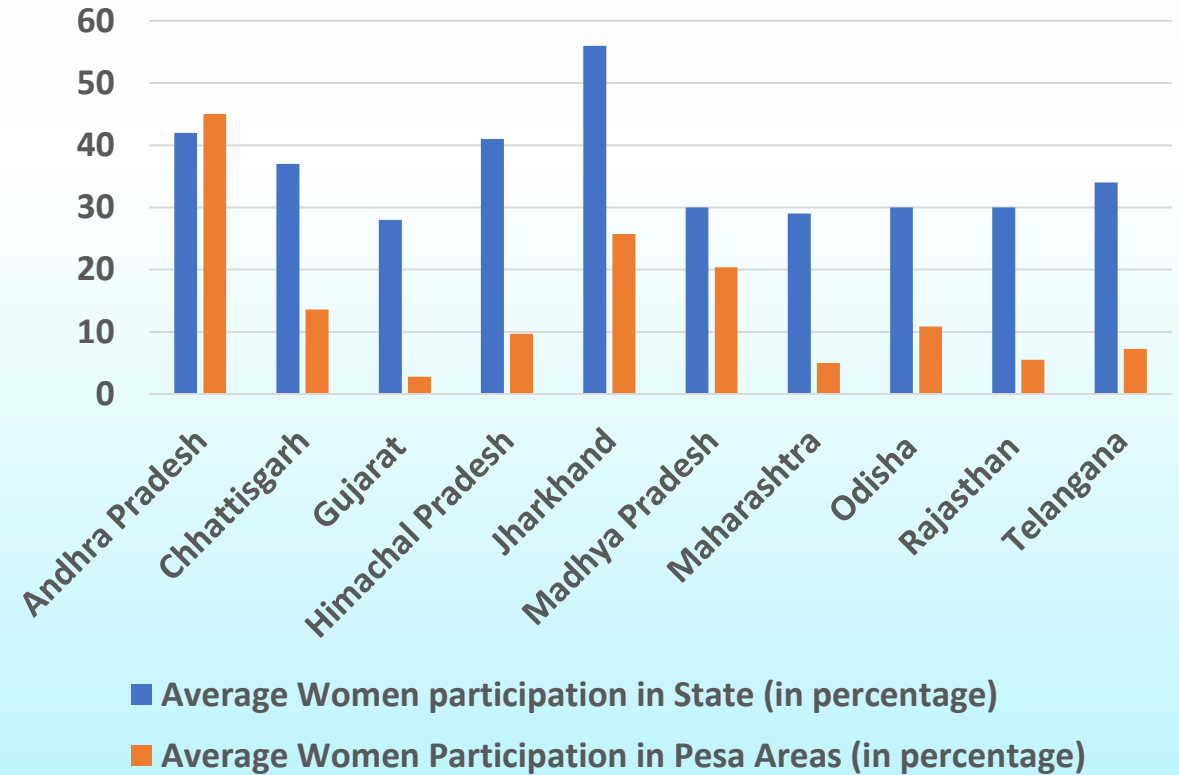
State wise Analysis of Sample data of PESA Areas



Attendance in Gram Sabhas



Women Participation in Gram Sabha Meetings





सत्यमेव जयते

Compliance of important Subject laws with PESA



States	Land acquisition	Excise	Forest produce	Mines and minerals	Agri produce market	Money lending
Andhra Pradesh	N	N	N	N	N	N
Chhattisgarh	Y	Y	N	Y	Y	Y
Gujarat	Y	Y	Y	Y	Y	Y
Himachal Pradesh	Y	Y	Y	Y	N	N
Jharkhand	N	N	Y*	N	N	N
Madhya Pradesh	Y	Y	N	Y	Y	N
Maharashtra	Y	N	Y	Y	N	Y
Odisha	N	Y	Y	Y	N	N
Rajasthan	N	N	N	Y	N	N
Telangana	N	N	N	N	N	N

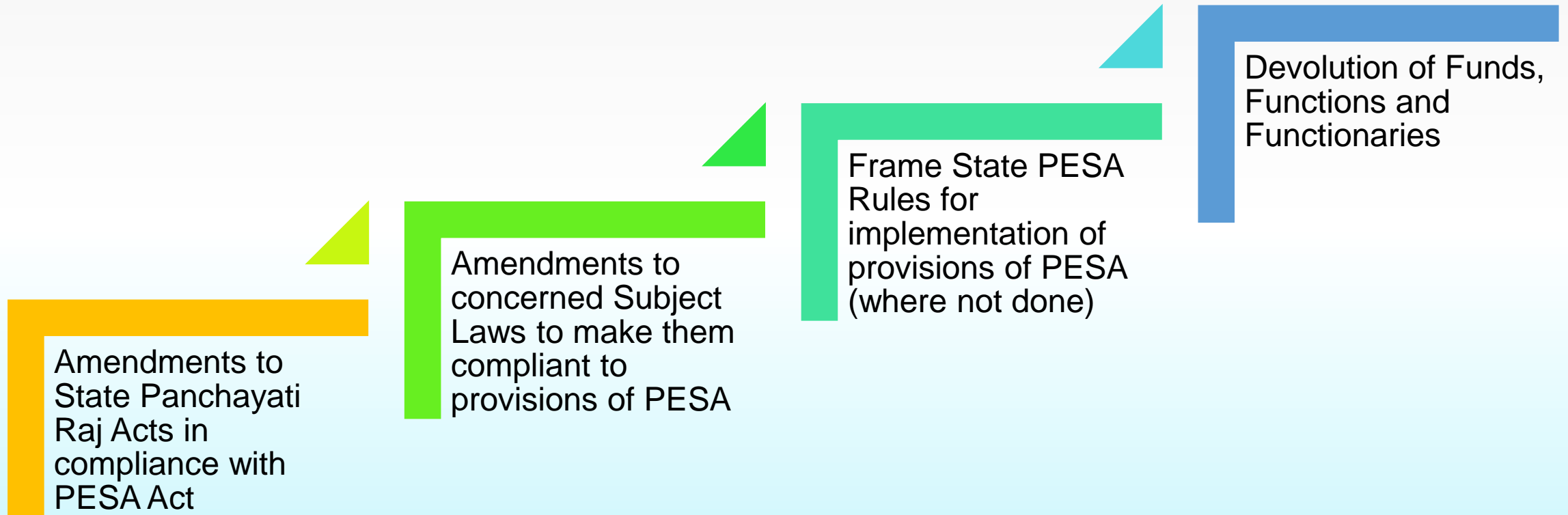
**Jharkhand Govt. has adopted a resolution on 8.2.2007 conferring ownership right over Minor Forest Produce to Gram Panchayats.*

'Y' denotes the provision has been made PESA compliant.

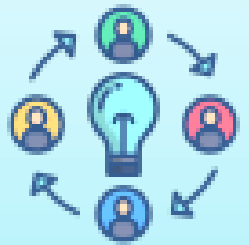
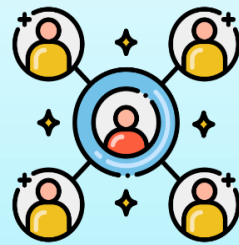
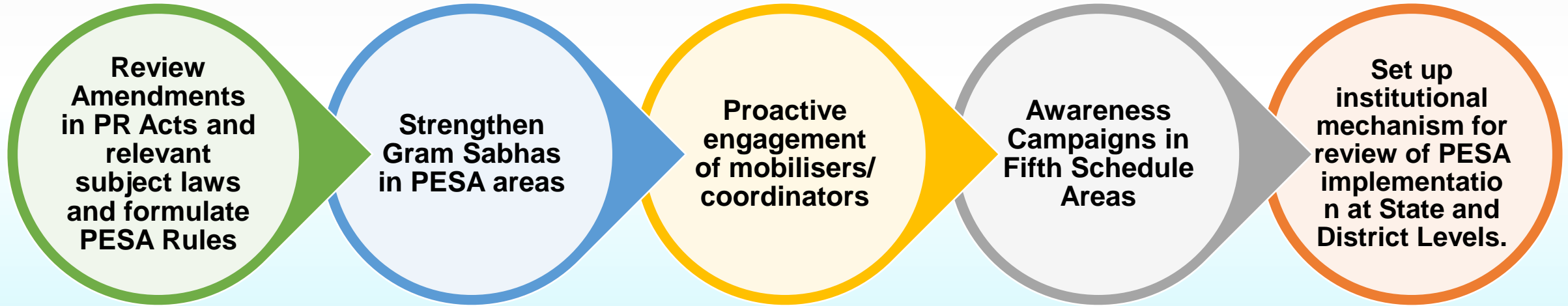
'N' denotes action is yet to be completed.



Actions Required for PESA Implementation



Panchayats being a “State” subject, the powers pertaining to functioning of PRIs (including framing of local laws) rests with respective State Governments



THANK YOU